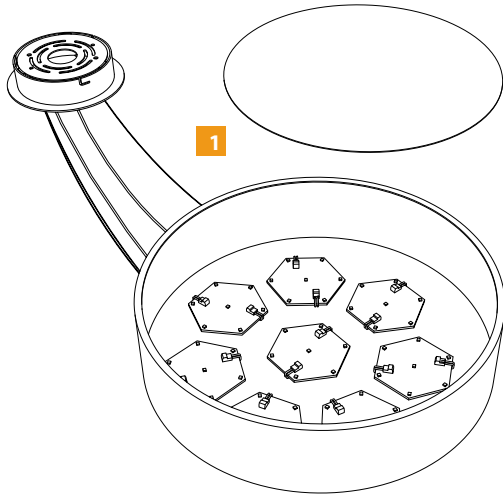


# Installation instructions for: CH458, CH459 Moment Suspension

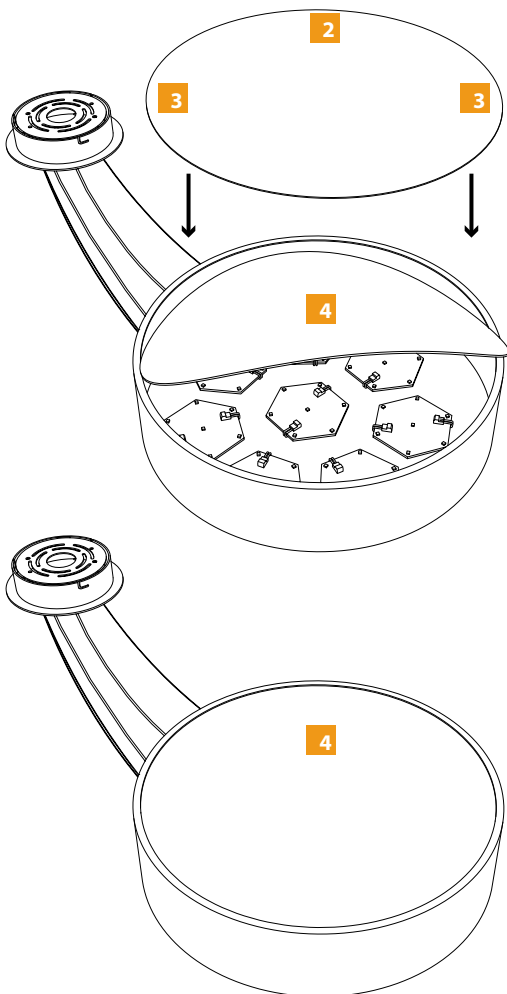
**1** Unpack all items and lay out.



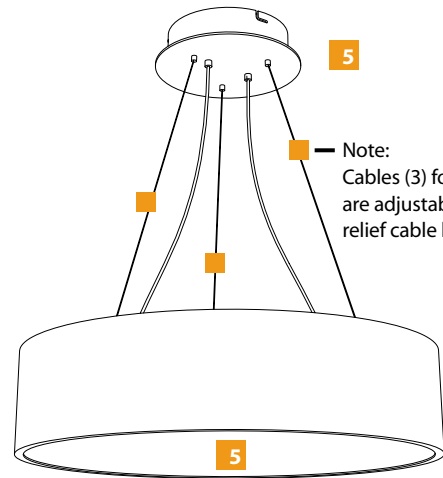
**2** Take acrylic face and lay on face of the body.

**3** Find the sides of the round acrylic with flat points.

**4** Grab acrylic near flat points, and slightly flex acrylic while pressing into the body.

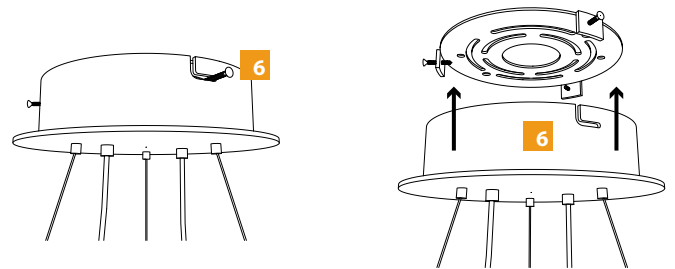


**5** Once acrylic is in, body can hang, and acrylic should align at the base of the body.



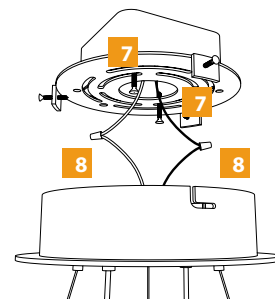
Note:  
Cables (3) for hang the body,  
are adjustable by pressure  
relief cable holders.

**6** Loosen screws on the canopy backplate. Backplate will twist off.

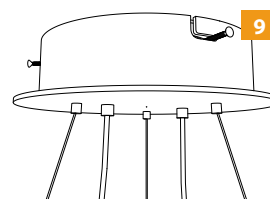


**7** Mount backplate

**8** Wire the canopy.



**9** Reinstall canopy to backplate and retighten screws.



**10** Turn Power On

